

COVID-19 EPIDEMIOLOGICAL UPDATE

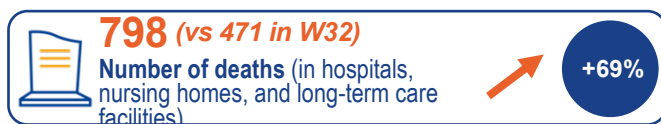
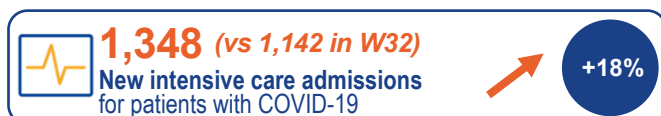
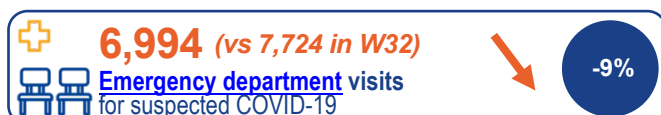
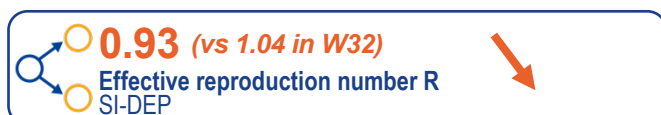
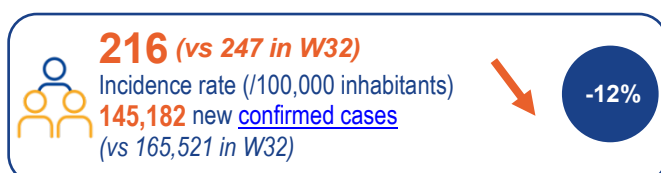
Weekly report / Week 33 / 26 August 2021

As part of its surveillance, alert, and prevention missions, Santé publique France analyses and publishes COVID-19 data obtained from its network of partners as well as its own studies and surveys. This report is based on data reported to Santé publique France up to 25 August 2021.

Key numbers

Week 33 (16-22 August 2021)

Compared to week 32 (9-15 August 2021)



As of 24 August

Compared to 17 August 2021



Key points

Epidemiological situation

- In week 33, the circulation of SARS-CoV-2 slowed in metropolitan France, with a decrease in the incidence rate but hospital indicators still on the rise. The situation remained extremely critical in Martinique and Guadeloupe.

- Metropolitan France:

- Incidence and hospitalisation rates still the highest in Provence-Alpes-Côte d'Azur, Occitania, and Corsica

- Overseas France:

- Guadeloupe and Martinique: very high incidence rate but decreasing
- Ongoing hospital tension with excess mortality (all-cause and all-age) in both territories
- Guyana: increase in the incidence rate and hospital indicators

Variants

- Delta variant identified in 98.1% of sequenced samples in metropolitan France on 3 August 2021

Contact tracing

- Mean number of contacts identified per case still at a low level, suggesting the less exhaustive identification of contacts

Prevention

- Vaccination coverage in the general population as of 24 August: 71.1% for at least one dose and 62.7% for full vaccination
- Improved vaccination coverage among healthcare professionals in recent weeks
- Importance of combining different measures: vaccination, preventive measures, and contact tracing

* Santé publique France thanks the large network of actors on which it relies to ensure its COVID-19 surveillance: private practice doctors, medico-social emergency (SAMU), Centre 15, hospital doctors, hospital and private medical biology laboratories, learned societies for infectious diseases, resuscitation, and emergency medicine, CNAM, INSERM, and INSEE.

SITUATION UPDATE

In week 33, the circulation of SARS-CoV-2 slowed at the national level, although hospital indicators were still on the rise in metropolitan France. The situation remained extremely critical in Martinique and Guadeloupe, and preoccupying in Guyana. At the national level, with the implementation of the health pass, the screening rate stabilised at a very high level in week 33. The incidence rate was the highest among 10-39 year-olds. The number of contacts reported by cases continued to decrease, indicating the less exhaustive identification of contact persons. As of 24 August, 71.1% of the French population had received at least one vaccine dose, and 62.7% were fully vaccinated. A marked increase in vaccination coverage was seen among healthcare professionals in recent weeks. In view of the end of the summer holidays and the start of the new school year, the vaccination of all eligible people is crucial. Vaccination should be combined with a high level of adherence to other preventive measures, notably by respecting protective measures, limiting contacts at risk, and self-isolating in the case of symptoms, confirmed infection, or contact with a confirmed case. Combining these different measures, which all contribute to limiting the transmission of SARS-CoV-2, can have a major impact on hospital dynamics.

EPIDEMIOLOGICAL UPDATE

At the national level, the incidence rate was 216/100,000 inhabitants, decreasing this week (-12%), although it nevertheless represented an average of 20,740 diagnosed cases per day in week 33. The reproduction number was down, being significantly less than 1 (0.93 vs 1.04 in week 32). Decreasing in all age groups, the incidence rate remained the highest among 20-29 year-olds (402, -18%). The screening rate based on antigenic and PCR tests (excluding self-testing), which was already at a very high level, remained stable at 7,111/100,000 inhabitants (-1%). The positivity rate decreased slightly to 3.0% (-0.4 points).

The number of consultations for suspected COVID-19 diminished in both SOS Médecins organisations (1,890, -10% vs -0.3% in week 32) and emergency departments (6,994, -10% vs +13% in week 32).

Hospital indicators continued to rise, with 6,154 new hospital admissions (+18% vs +9% in week 32) and 1,348 new intensive care admissions (+18% vs +5% in week 32). The number of hospitalised COVID-19 patients reached 11,127 (+8%) in week 33, including 2,234 (+14%) in intensive care. COVID-19-related deaths increased (798, +69%) in hospitals and long-term care facilities.

In metropolitan France, the incidence rate, though on a downward trend, remained the highest in Provence-Alpes-Côte d'Azur (531/100,000, -10%), Corsica (343, -33%), and Occitania (318, -19%). While decreasing or stabilising in all regions, the screening rate was also the highest in these three regions. On 24 August, the hospitalisation rate by date of admission showed a stabilising trend in all regions, with the exception of Pays de la Loire, Centre-Val de Loire, and Brittany where it increased. The highest rates were still in Provence-Alpes-Côte d'Azur (18.3/100,000), Occitania (10.0), and Corsica (9.9).

In overseas France, the situation remained extremely critical in Martinique and Guadeloupe. Though on a downward trend, the incidence rate was still very high, reaching 1,885/100,000 inhabitants (-16%) in Guadeloupe and 896 (-22%) in Martinique, with saturated hospital capacity. High excess mortality (all-cause and all-age) has been observed in both territories since week 30.

In Guyana, the already high incidence rate continued to increase this week (434, +16%), as did the hospital admission rate.

VARIANTS OF CONCERN

The Delta variant now represents nearly all viruses circulating in metropolitan France, corresponding to 98.1% of interpretable sequences in Flash Survey #18 on 3 August. In overseas France, the screening and sequencing data also indicate the predominance of Delta, as its proportion continues to increase in all overseas territories.

CONTACT TRACING

The number of new cases and new [contacts](#) diminished in week 33 compared to the previous week (-11% and -6%, respectively). The low average number of contacts reported per case and the low proportion of cases previously identified as contacts suggest that a high proportion of contacts at risk are not being identified by the index case.

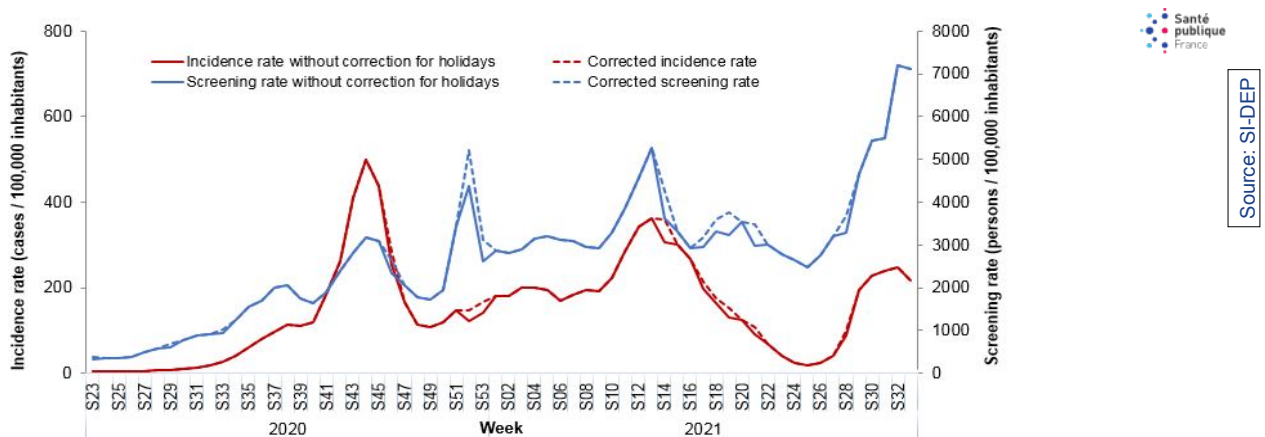
PREVENTION

As of 24 August, 71.1% of the French population had received at least one vaccine dose, and 62.7% were fully vaccinated. Vaccination coverage of 12-17 year-olds continued to progress, reaching 59.1% (vs 54.6% on 17 August) for one vaccine dose and 37.7% (vs 30.3%) for full vaccination. A marked increase in vaccination coverage has been observed among healthcare professionals in recent weeks.

Confirmed cases, incidence, and screening

Nationally, the [incidence rate](#) was 216 per 100,000 inhabitants in week 33 (vs 247 in week 32, -12%), while the [screening rate](#) was stable (7,111/100,000 vs 7,200 in week 32, -1%). The [positivity rate](#) was 3.0% (vs 3.4% in week 32, -0.4 points). Among tested individuals who reported the presence or absence of symptoms, 95% were asymptomatic, which was stable compared to week 32. The number of asymptomatic cases diminished (68,312, -12%), as did the number of symptomatic cases (63,399, -13%). Overall, 48% of cases were symptomatic (stable compared to week 32). The positivity rate diminished among the 225,090 symptomatic individuals (28% vs 31% in week 32) and the 4,196,806 asymptomatic individuals (1.6% vs 1.8% in week 32).

Weekly trends in the incidence and screening rates, with or without correction for the effect of public holidays, since 1 June 2020, France (as of 25 August 2021)

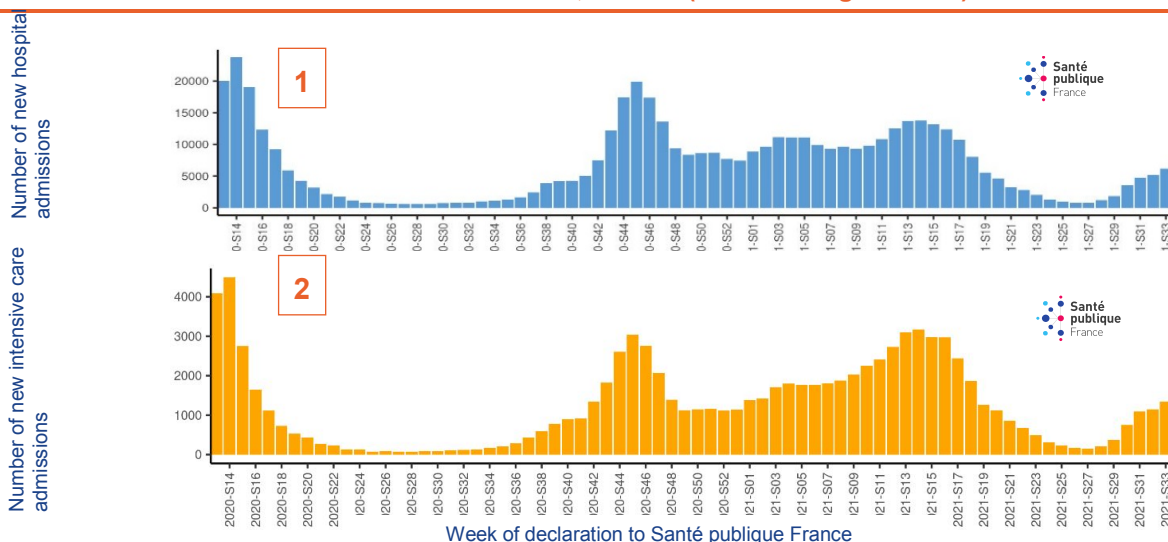


Source: SI-DEP

Hospitalisations, intensive care admissions, and deaths

On 24 August 2021, 11,127 COVID-19 patients were hospitalised in France (vs 10,280 on 17 August, +8%), including 2,234 in intensive care (vs 1,966 on 17 August, +14%). At the national level, hospital indicators based on the date of declaration showed a moderate increase, with **6,154 new hospital admissions** in week 33 (+18% from week 32) and **1,348 new intensive care admissions** (+18%).

Weekly number of new hospital (1) and intensive care (2) admissions for COVID-19 patients since 23 March 2020, France (as of 22 August 2021)



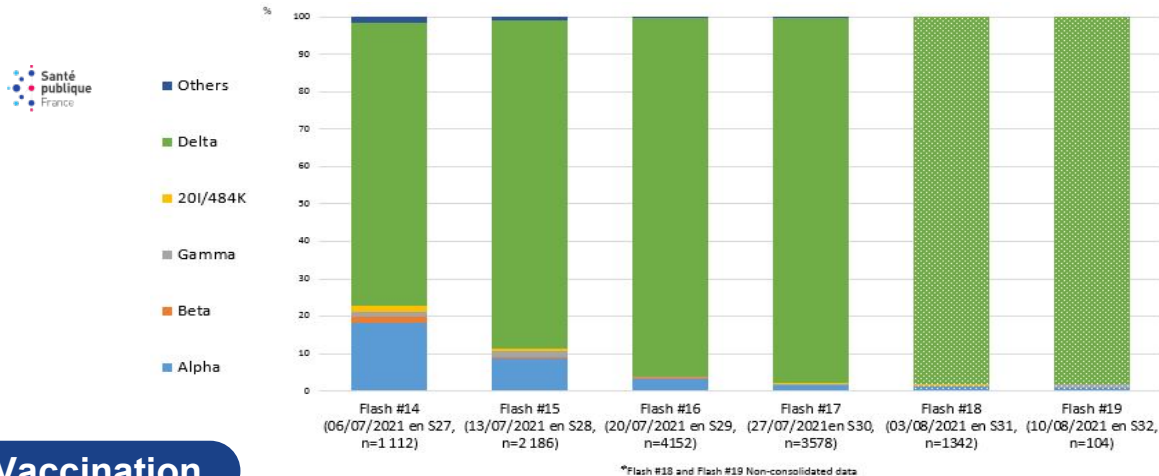
Source: SI-VIC

- At the national level, there were **767 deaths in hospital** in week 33, up from week 32 (+76%), as well as 31 deaths in long-term care facilities (vs 35 in week 32). Data taken from long-term care facilities in week 33 are not consolidated.
- Indicators by date of declaration are overestimated in week 33 due to the inclusion of input data in the SI-VIC system for hospital admissions, intensive care admissions, and deaths occurring in week 32 in Guadeloupe and Martinique. These indicators nevertheless increased in metropolitan France in week 33.

Variants of concern

The L452R mutation (notably driven by the Delta variant) was detected in 95.2% of screened positive samples in week 33 (vs 94.5% in week 32). [Sequencing data](#) confirm that the Delta variant has been the dominant [variant](#) in metropolitan France since week 26, representing 98.1% of interpretable sequences in Flash Survey #18 on 3 August (with a similar trend observed in Flash #19 despite the low number of interpretable sequences). In overseas France, the screening and sequencing data also indicate the predominance of Delta, with the proportion continuing to increase in all territories with the rates of positive tests screened for the L452R mutation exceeding 70% in week 33.

Proportions of variants of concern detected by sequencing during the Flash surveys (#14 to #19) (6 July to 10 August 2021) in metropolitan France

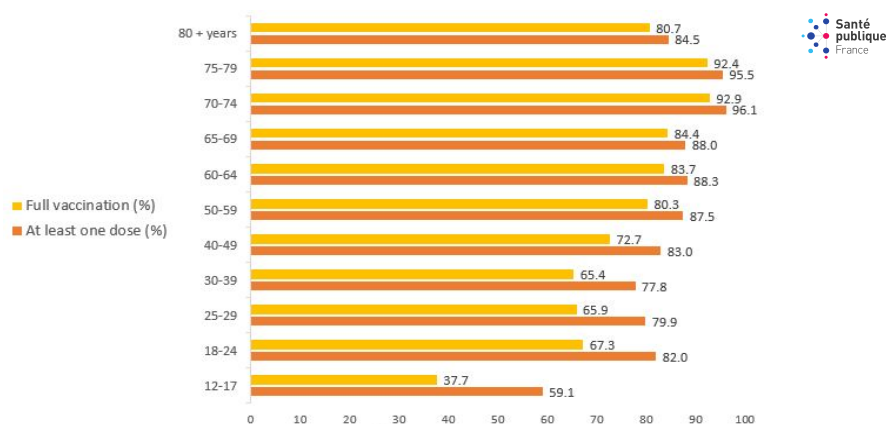


Source: EMERGEN
Data processing by Santé publique

Vaccination

On 24 August, [vaccination coverage](#) in France based on Vaccin Covid was estimated at 71.1% for at least one dose and 62.7% for full vaccination. Among the population aged 12 years and older, 47,671,673 had received at least one dose (82.7%), and 42,079,049 (73.0%) were fully vaccinated. For residents of nursing homes and long-term care facilities, 92.0% had received one dose (88.8% fully vaccinated). Among healthcare professionals, vaccination coverage with one dose was 85.9% for professionals working in nursing homes and long-term care facilities up from 84.0% on 17 August (76.5% vs 72.3% for full vaccination), and 92.0% for professionals in private practice up from 91.0% (87.7% vs 86.0% for full vaccination). For healthcare professionals working in health establishments, vaccination coverage with one dose was estimated at 85.6% on 24 August compared to 83.9% on 17 August (77.6% vs 73.8% for full vaccination).

Vaccination coverage by age group in France as of 24 August 2021 (in %)



Sources: Data from Vaccin Covid, Cnam
Data processing by Santé publique France

Check out the surveys of the week

Update on Flash Survey #17

Surveillance of cases of paediatric multisystem inflammatory syndrome

For more information on COVID-19, the surveillance systems in place, and vaccinations, consult the websites for [Santé publique France](#) and [Vaccination Info Service](#). Find all the open access data on [Géodes](#).

For more information on the regional data, see [Regional Epidemiological Updates](#).